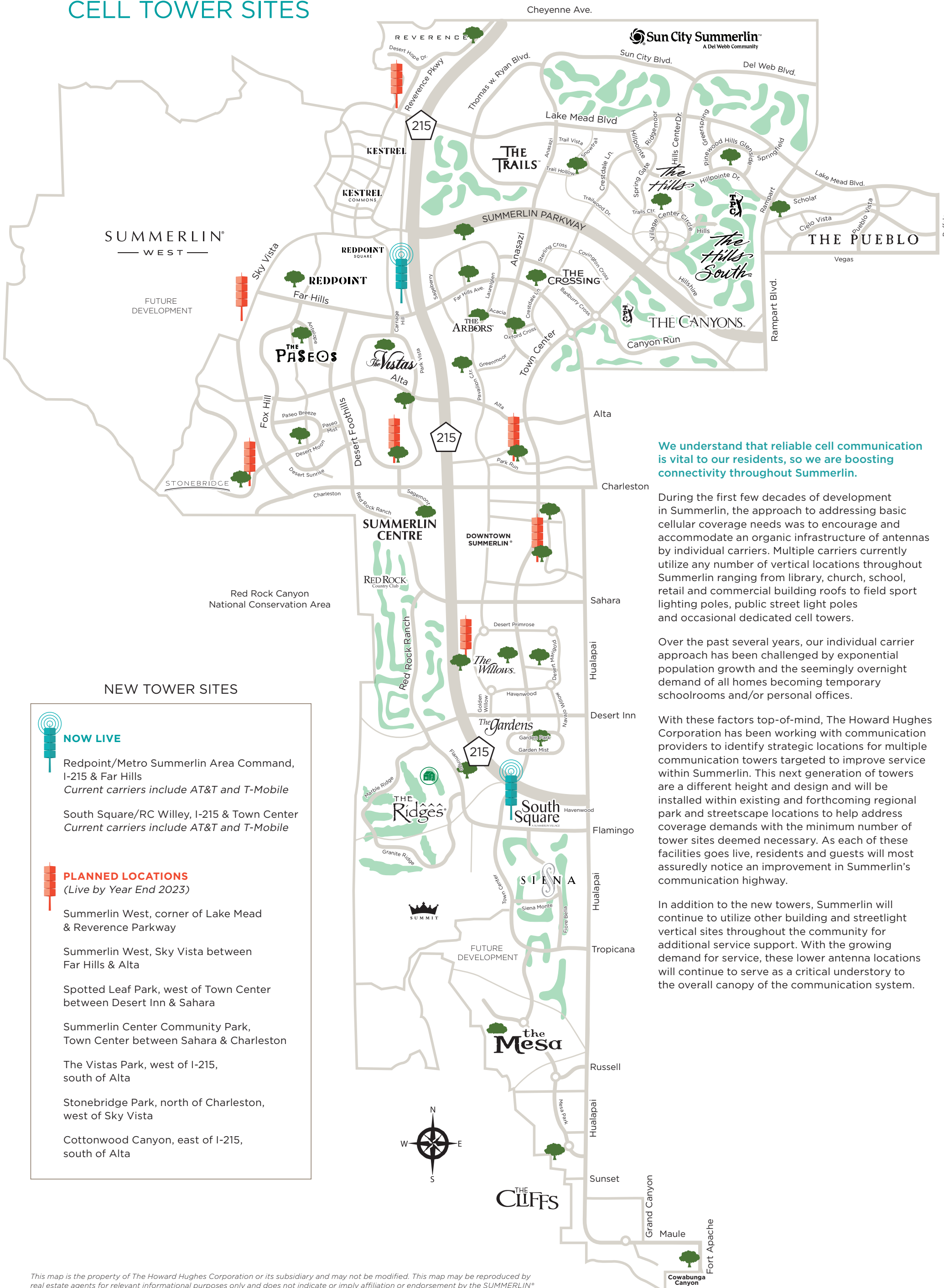


# SUMMERLIN®

## CELL TOWER SITES



We understand that reliable cell communication is vital to our residents, so we are boosting connectivity throughout Summerlin.

During the first few decades of development in Summerlin, the approach to addressing basic cellular coverage needs was to encourage and accommodate an organic infrastructure of antennas by individual carriers. Multiple carriers currently utilize any number of vertical locations throughout Summerlin ranging from library, church, school, retail and commercial building roofs to field sport lighting poles, public street light poles and occasional dedicated cell towers.

Over the past several years, our individual carrier approach has been challenged by exponential population growth and the seemingly overnight demand of all homes becoming temporary schoolrooms and/or personal offices.

With these factors top-of-mind, The Howard Hughes Corporation has been working with communication providers to identify strategic locations for multiple communication towers targeted to improve service within Summerlin. This next generation of towers are a different height and design and will be installed within existing and forthcoming regional park and streetscape locations to help address coverage demands with the minimum number of tower sites deemed necessary. As each of these facilities goes live, residents and guests will most assuredly notice an improvement in Summerlin's communication highway.

In addition to the new towers, Summerlin will continue to utilize other building and streetlight vertical sites throughout the community for additional service support. With the growing demand for service, these lower antenna locations will continue to serve as a critical understorey to the overall canopy of the communication system.

### NEW TOWER SITES



#### NOW LIVE

- Redpoint/Metro Summerlin Area Command, I-215 & Far Hills  
Current carriers include AT&T and T-Mobile
- South Square/RC Willey, I-215 & Town Center  
Current carriers include AT&T and T-Mobile



#### PLANNED LOCATIONS (Live by Year End 2023)

- Summerlin West, corner of Lake Mead & Reverence Parkway
- Summerlin West, Sky Vista between Far Hills & Alta
- Spotted Leaf Park, west of Town Center between Desert Inn & Sahara
- Summerlin Center Community Park, Town Center between Sahara & Charleston
- The Vistas Park, west of I-215, south of Alta
- Stonebridge Park, north of Charleston, west of Sky Vista
- Cottonwood Canyon, east of I-215, south of Alta

This map is the property of The Howard Hughes Corporation or its subsidiary and may not be modified. This map may be reproduced by real estate agents for relevant informational purposes only and does not indicate or imply affiliation or endorsement by the SUMMERLIN® development or The Howard Hughes Company, LLC. This map is provided "as is" and without warranty of any kind. SUMMERLIN and the Mountain Design are registered trademarks of The Howard Hughes Company, LLC.